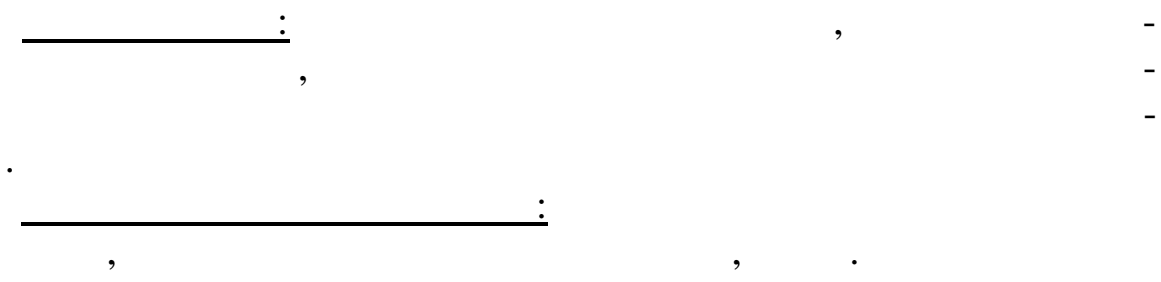


13.



1. , COS- , PBR322, -

2. ? ? ? pUC. ?

3. -

4. :

1. pSC101? 5`- -3` 3`- -5`

2. pSC101? -

) 5`- -3` ) 5`- -5`

3. pBR322 - ?

5`-  
3`-

-3`  
-5`

5`-  
3`-

-3`  
-5`

4.

pBR322?

5`-  
3`-

-3`  
-5`

5`-  
3`-

-3`  
-5`

5.

pUC18

10

,  
.

?

5`-  
3`-

-3`  
-5`

5`-  
3`-

-3`  
-5`

6.

:

5`-  
3`-

-3`  
-5`

pBR322?

pBR322?

7.

pBR322

8.

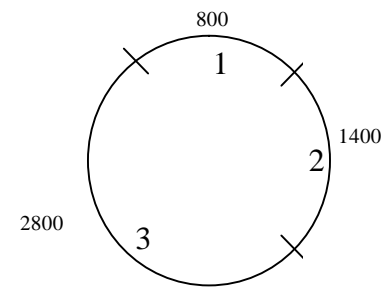
?  
Ms

5 000

(5 000 ).

Hind III

1, 2 3,  
13.1 (H - Hind III  
):



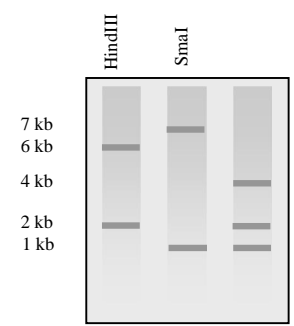
. 13.1 -

Hind III.

300  
 9. Ms, Ms? , 4 ,  
 EcoRI, pBR322 EcoRI .  
 13.2.  
 pBR322.  
 ?

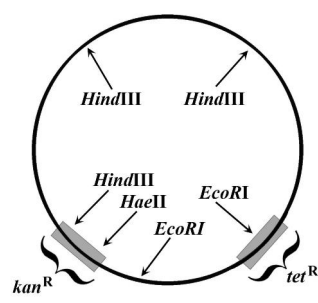
10. - Neurospora, E.coli. -

Podospora,  
 13.3, pBR,  
 (kan)



(tet).  
 11. 6  
 pBR 322 EcoRI

13.2- -



9.  
 13.4.  
 pBR322.

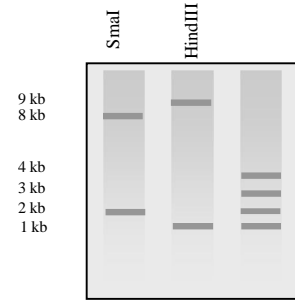
.13.3-  
 pBR,  
 .

?  
12.  
pUC18.

1

E. coli

X-Gal.



. 13.4-

pUC18?  
13.

coli.  
Hind III

pUC18 Hind III

1

E.

pUC18

14.

?

13

Hind III EcoR1?

pUC18

15.

?

5`-

3`-

-3`

-5`

5`-

3`-

-3`

-5`

16.

8

EcoR1.

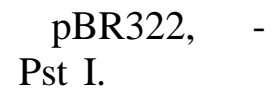
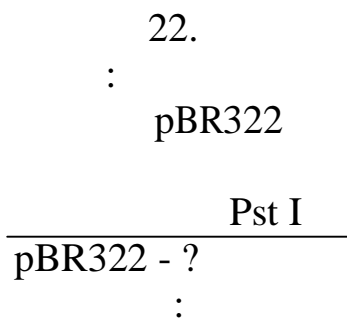
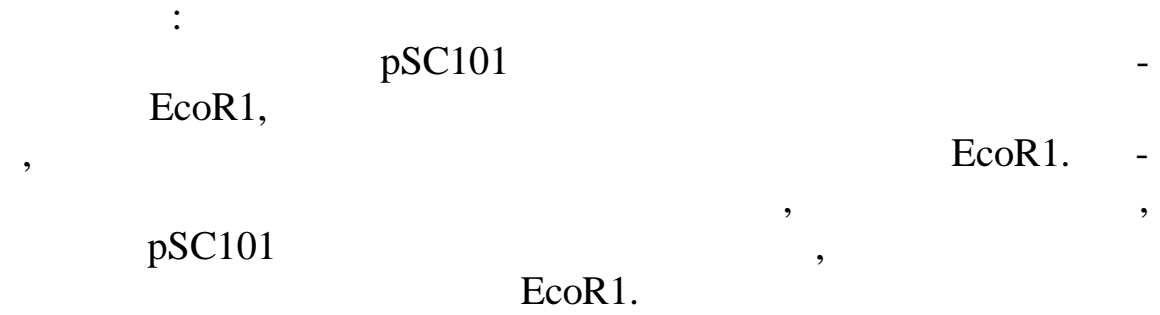
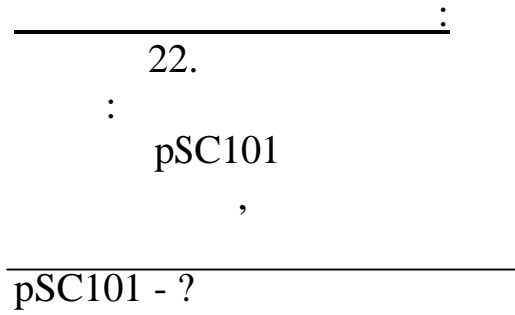
?

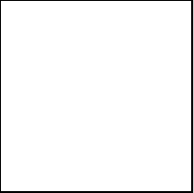
17.

20

?

18.		200	.
			-
			.
19.	?		
	EcoRI		-
		4096	
			.
	Saccharomyces cerevisiae		
	EcoRI (		
cerevisiae,			
	)?		
		Saccharomyces	
		13,5 × 10 <sup>6</sup>	
20.	Drosophila melanogaster,		-
	10 <sup>8</sup>		-
			-
	EcoRI,		
	E. coli.		-
	Drosophila melanogaster		
	?		
21.			
	Not I,		-
	,		
	E. coli.		-
	?		
22.			
	pSC101		-
	EcoR1.		-
		?	
1) 5`-			-3`
3`-			-5`
2) 5`-			-3`
3`-			-5`
23.		Pst I	-
		.	-
	pBR322?	,	-
	pBR322?		





Pst I, -

,  
:

Pst I

( )

Ap.

, , -

( ) , , -

, , -  
, , -

pBR322 , Pst I

pBR322.

pBR322

5.

3.3.

- 1.
- 2.
- 3.
- 4.
- 5.
- 6.

:  
?

pSC101 pBR322?

?

?

?

?